

EVO 1 Quick Reference Guide

SYSTEM SET-UP



1. Press ON button on back right lower side of monitor.

Patient

2. Enter new patient information: Patient ID, last name, first name, and physician name.

Next

3. Attach ClariTEE[®] probe to handle. Press NEXT on the screen.



4. Press FREEZE to begin real-time imaging.

PROBE INSERTION AND IMAGING

1. Insert the probe.

2. Position the probe to obtain the desired image.



3. Press OPTIMIZE. The system automatically adjusts gain and gray scales.

Controls

4. Press CONTROLS to optimize the image.



- GAIN adjusts brightness for the entire image.
- TGC adjusts brightness for multiple levels of the image.
- REJECT adjusts grayscale pixels along a contrast curve.
- DYNAMIC RANGE adjusts grayscale pixels along a smoothness curve.
- DEPTH adjusts display depth.



5. Capture (record) 3-second image loops in one of two ways.

- Press blue button on probe handle.
- Press REC on screen.

Load

6. Press LOAD to review loops.

- A separate folder for each calendar day stores that day's loops.
- Choose a loop and press OK.
- Swipe screen left for previous loop or right for next loop.
- To directly compare two loops, press SPLIT VIEW.
- Press LOAD to choose Left and Right loop.

Split View

Load

SYSTEM SHUTDOWN



1. Detach probe from handle. Place cover over pins.

End Exam

2. Press END EXAM.

Shutdown

3. Press SHUTDOWN.

Additional Features

FREQUENCY



Press "High Definition" on top right of screen to adjust ultrasound frequency.

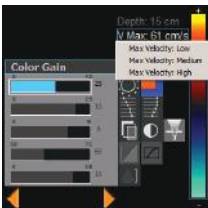
The system provides three frequencies, the middle one is the default setting.

- Penetration = 5 MHz for maximum penetration.
- High Definition (default) = 6 MHz for normal imaging.
- Resolution = 7 MHz for highest resolution.

COLOR FLOW IMAGING AND OPTIMIZATION

Color Flow

Press COLOR FLOW and a color flow box will appear. You can reposition the box directly on the touchscreen.



- GAIN: Color gain is adjusted by pressing arrows or using the slider.
- VELOCITY: Press "V Max" (right side of screen) to select LOW-MEDIUM-HIGH.
- MAPS: Press the color bar to cycle through different velocity maps.

MEASURING - CHOOSE LOOP AND SCROLL TO CORRECT POSITION

Load

1. Press LOAD. Choose a saved loop and press OK.

Measure

2. Press MEASURE.



3. Choose TGS AV, ME4CH, or SVC.

4. Place cursor at starting point and left click to start trace.



5. Once trace is complete, right click on LVEDA (TGS AV example) and a pop-up will ask, "Use current trace?" If yes, left click on the pop-up to store the value.

6. Scroll to LVEDA frame and repeat the process. The FAC will calculate for you.



Full EVO 1 screen with CONTROLS shown.